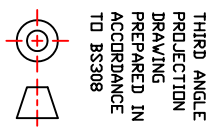
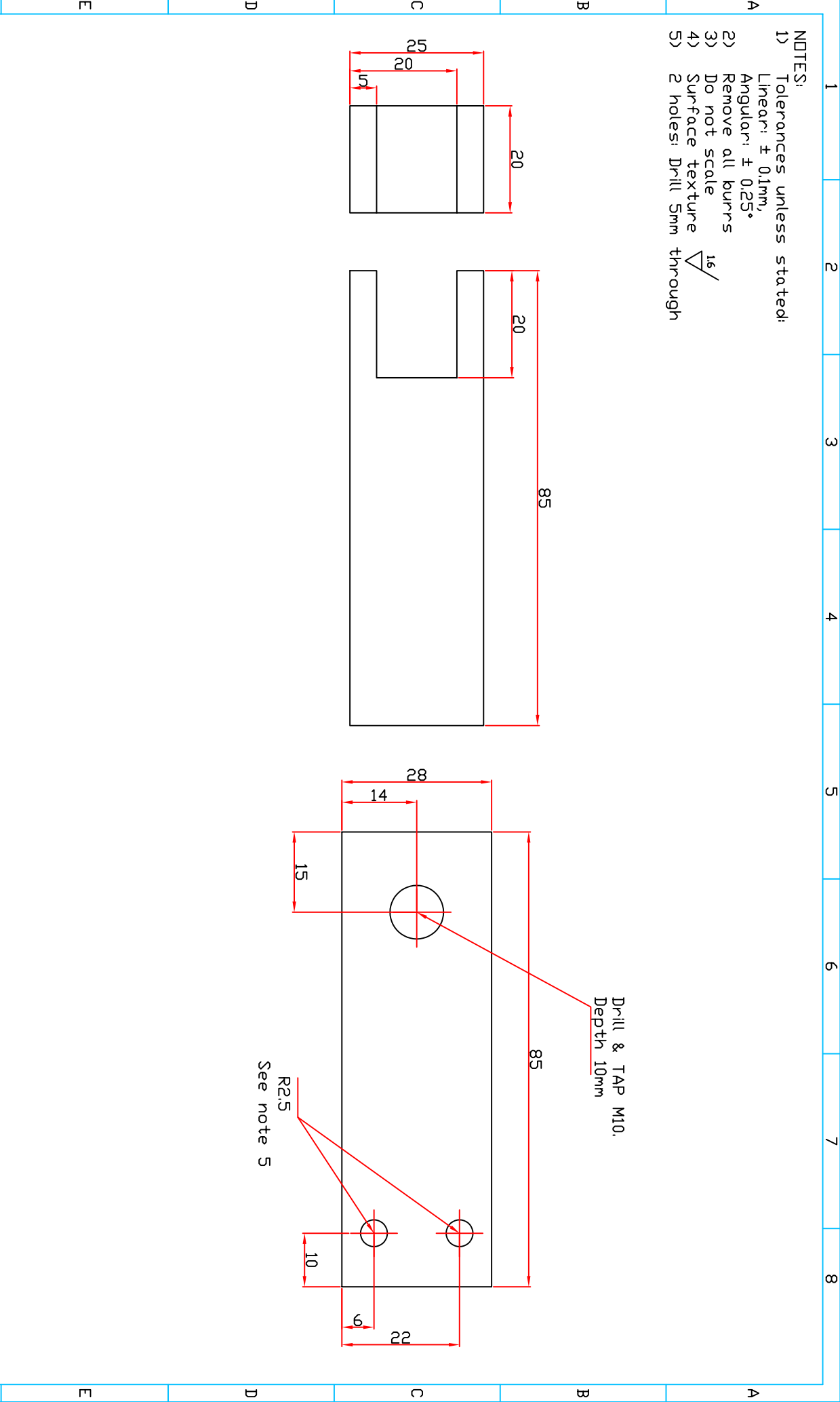
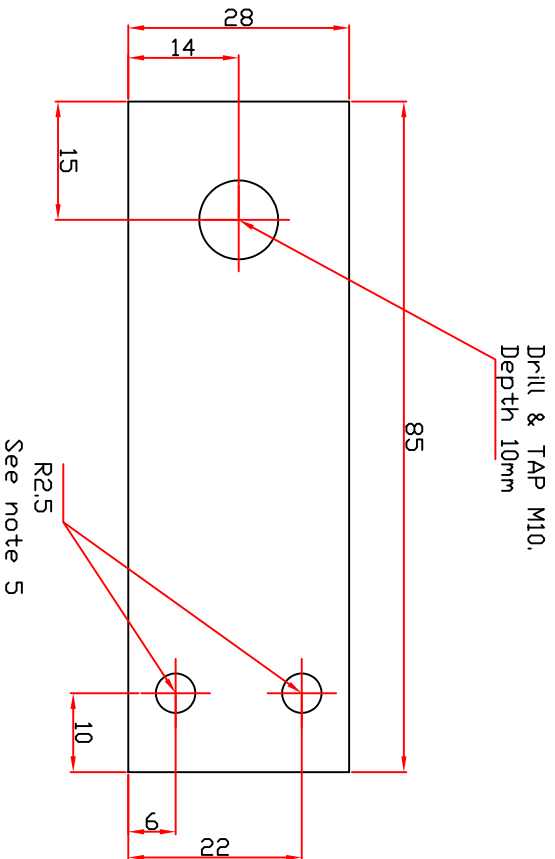
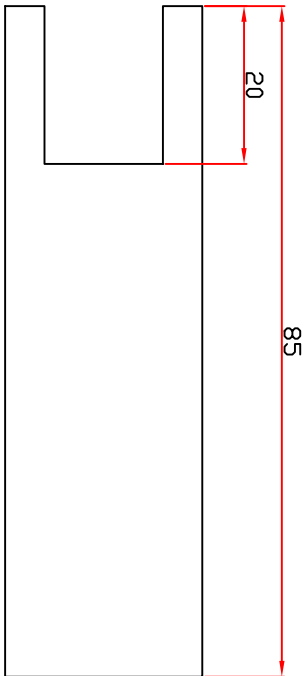
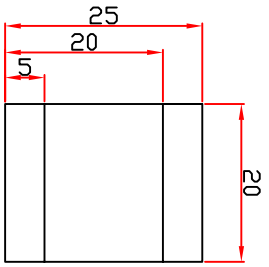


- NOTES:
- 1) Tolerances unless stated:  
Linear:  $\pm 0.1\text{mm}$ ,  
Angular:  $\pm 0.25^\circ$
  - 2) Remove all burrs
  - 3) Do not scale
  - 4) Surface texture  $\sqrt{1.6}$
  - 5) 2 holes: Drill 5mm through



THIRD ANGLE PROJECTION DRAWING PREPARED IN ACCORDANCE TO BS308		GENERAL SURFACE FINISH: $\mu\text{m}$ CLA R <sub>a</sub> UNLESS OTHERWISE STATED		DIMENSIONS: mm	
MATERIAL: Aluminium		HEAT & SURFACE TREATMENT		TITLE: MICE TARGET - Cooling Supply & return clamp	
<p>ALL PROPRIETARY RIGHTS IN THE SUBJECT MATTER HEREOF ARE RESERVED BY SHEFFIELD UNIVERSITY AND NO PERMISSION IS GRANTED TO REPRODUCE THIS PRINT IN WHOLE OR IN PART, OR TO DISCLOSE ANY OF THE INFORMATION UPON IT TO OTHERS.</p>					
ISSUE	DATE	INITIAL	ISSUE	CHK	APP.
	11/02/08			MM	
SCALE: 3 : 1			DATE: 11/02/08		
DRAWN: M. MOHAMMAD			RAL REF:		
UNIVERSITY OF SHEFFIELD DEPARTMENT OF PHYSICS & ASTRONOMY S3 7RH Tel: 0114-2223543			DRAWING NUMBER TD-SU_31		
			A4		